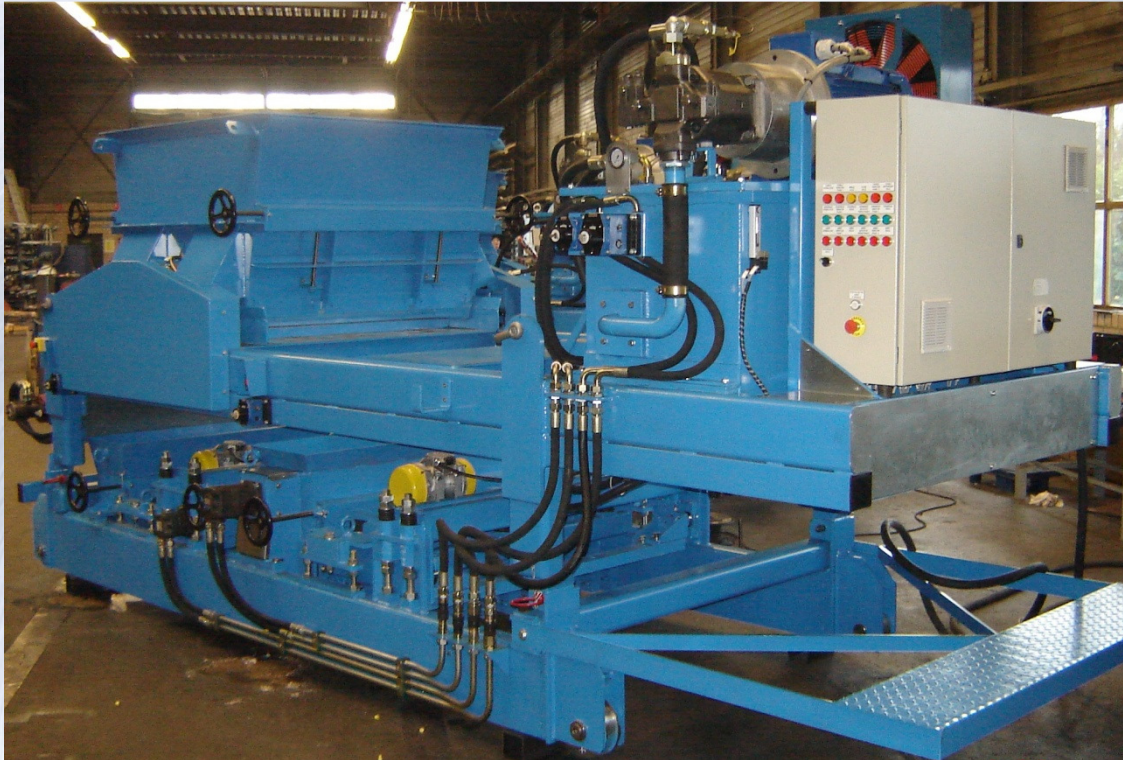


# Solutions for the Prefab Concrete Industry

## VD WEERT Concrete Machines

### Universal Slipformer



The Two-stage Slipformer machine is a combined machine which can produce more than one type of hollow-core slab, beam or solid slab thicknesses. The machine is built up with a universal upper frame which contains the power-unit and the hopper. The lower section of the machine is the casting section. This cassette contains two vibrating stages, of which one with an adjustable frequency. By having more than one lower section, for your different products, maximum reduce of machine change over time will be established. Standard the machine is set up for 1200 mm wide slabs, all other widths are possible on request e.g. 600mm or a 600/400 mm combination. A other possibility is to create an adjustable split slab machine, in this case a nice smooth split slab will be created with no cutting edge. Also the production time will be reduced and the waste will be at minimum. The machine movements are hydraulically driven, which is also low in maintenance. The machine is pulled over the bed by a hydraulically driven winch drum with traction cable. Operation of the machine is done with an organized set of push buttons, on the side of the electrical cabinet and on each section of the machine. All separate movement of the machine are provided with speed regulators.

**The Slipformer is built custom made to your specific wishes, in other words a VD WEERT slipformer is an absolute completion and improvement on your concrete manufacturing process!**



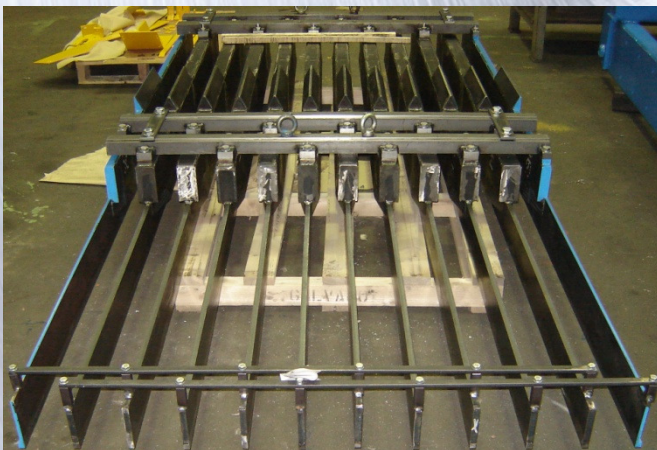
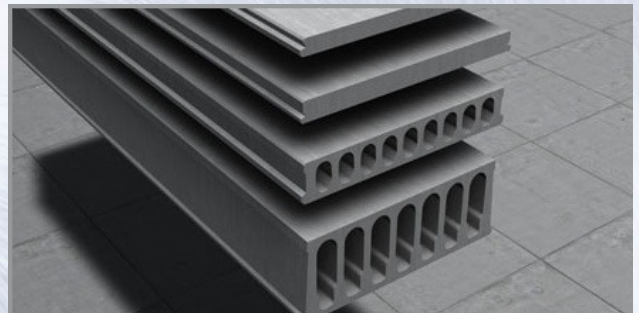
Machinefabriek  
**van de Weert** | Helmond b.v.

Rietbeemdweg 1B, 5705 BH Helmond NL (industrieterrein: 2118), Postbus 693, 5700 AR Helmond NL  
Telefoon: +31 (0)492 54 94 55, Fax: +31 (0)492 52 65 95, info@vandeweert.nl, www.vandeweert.nl

# Solutions for the Prefab Concrete Industry

## VD WEERT Concrete Machines

General Specifications	
Machine Length	~5,5 meter.
Machine Width	~1,9 meter (1200 mm track)
Machine Height	~2,5 meter.
Machine Weight	~ 3150 kg.
Supply voltage	400 Volts, cable drum or power rail
Rated current	100 Ampère
Hydraulic power	30 kW
Total power	39 kW
Working pressure	80 bar.
Maximum pressure	120 bar.
Standard casting units	Various types of beams, plank and hollow core slabs
Extra units	Extra oil cooler
Hopper volume	1m <sup>3</sup> (low version), ~2 m <sup>3</sup> (high version)



**Machinefabriek  
van de Weert** | Helmond b.v.

Rietbeemdweg 1B, 5705 BH Helmond NL (industrieterrein: 2118), Postbus 693, 5700 AR Helmond NL  
Telefoon: +31 (0)492 54 94 55, Fax: +31 (0)492 52 65 95, info@vandeweert.nl, www.vandeweert.nl