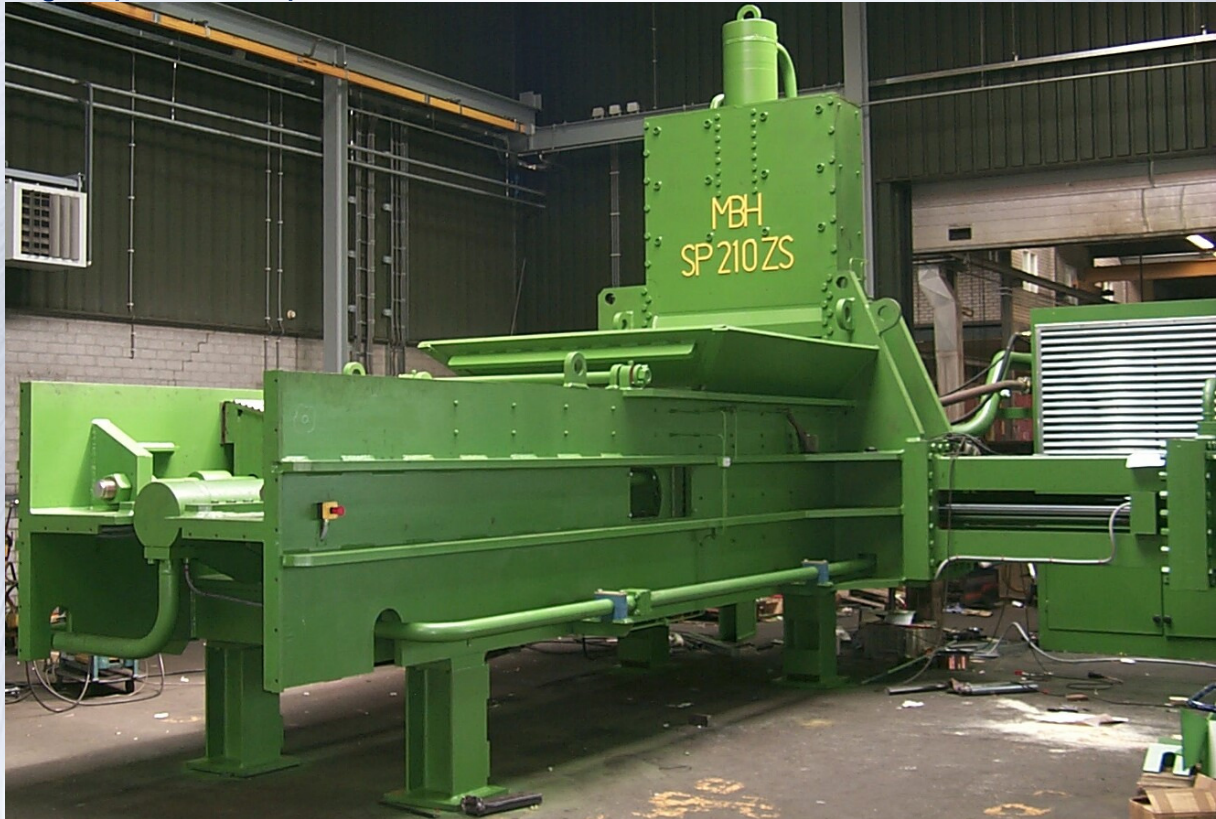


Solutions for the Recycling Industry

VD WEERT Recycling Machines

High speed scrap baler



The speed baler is a high speed automatic scrap baler for all types of steel and metal scrap, even if the material is bulky. If the material is bulky it will be cut like a guillotine shear between the first and second compression block. The hydraulically driven machine can be designed bale size of 300x300 mm or 400x400x mm, the length is various. The machine is operated with a operator friendly touch panel and a remote control, therefore operating from the loading crane is no problem. The machine can operate fully automatic, semi-automatic per cycle or on a manual mode. The machine is standard delivered with a box size of 2300 mm, extending the box with 1 meter is also possible. The machine is driven by a hydraulic power pack, 2x 75 kW, which is separated from the machine. At the same time that the machine is pressing a bale it can also be refilled for the next, which gives maximum efficiency on the capacity of the machine. Therefore a capacity of 80-90 bales per hours is possible, depending on speed of loading. The load and press box is provided with special trapezium shaped wear plates (Hardox 400) to prevent the ram to get jammed. When the wear plates get to their end of life they can easily be replaced with new plates. An integrated oil spraying systems reduces wear of the plates.

As we are a company that specializes in custom machines we are able to build you a dedicated bailer. Logistic solutions are available for handling the packages when they leave the bailer. Automatic stacking of the packages on a pallet is one of the options that can be added to your bailer.

THE VD WEERT SCRAP BALER, YOUR IDEAL PARTNER SCRAP RECYCLING!



Machinefabriek
van de Weert | Helmond b.v.

Rietbeemdweg 1B, 5705 BH Helmond NL (industrieterrein: 2118), Postbus 693, 5700 AR Helmond NL
Telefoon: +31 (0)492 54 94 55, Fax: +31 (0)492 52 65 95, info@vandeweert.nl, www.vandeweert.nl

Solutions for the Recycling Industry

VD WEERT Recycling Machines

General Specifications	
Machine Length	8000 mm, 9000 mm if extended with 1 meter
Machine Width	7000 mm including side cylinder
Machine Height	4400 mm
Machine Weight	58 Tons, 63 Tons if extended with 1 meter
Supply voltage	400 VAC.
Rated current	350A.
Pressing capacity	108 Mp first compression, 210 Mp second and third compression
Hydraulic power	2x 75 kW pumps (also 2x 90 kW possible) and a 22 kW steering pump
Max. Pressure	300 bar
Cycle time	Approximately 35-40 seconds
Bale size	300 x 300 x variable, 400 x 400 x variable
Operating system	Siemens S7-300, others possible on request
Operator interface	User friendly touch panel and remote control
Extra options	Conveyor belts, (robot) palletize systems, automatic lubrication, spraying systems, touch screen wireless integrated in the loading crane, external connection for service and support.



**Machinefabriek
van de Weert** | Helmond b.v.

Rietbeemdweg 1B, 5705 BH Helmond NL (industrieterrein: 2118), Postbus 693, 5700 AR Helmond NL
Telefoon: +31 (0)492 54 94 55, Fax: +31 (0)492 52 65 95, info@vandeweert.nl, www.vandeweert.nl